

REACH:

BE PREPARED

SGS

ONCE UPON A TIME...

It took REACH (Registration, Evaluation, Authorization and Restriction of Chemicals) a decade to come into force.

But you might not have a decade to comply!

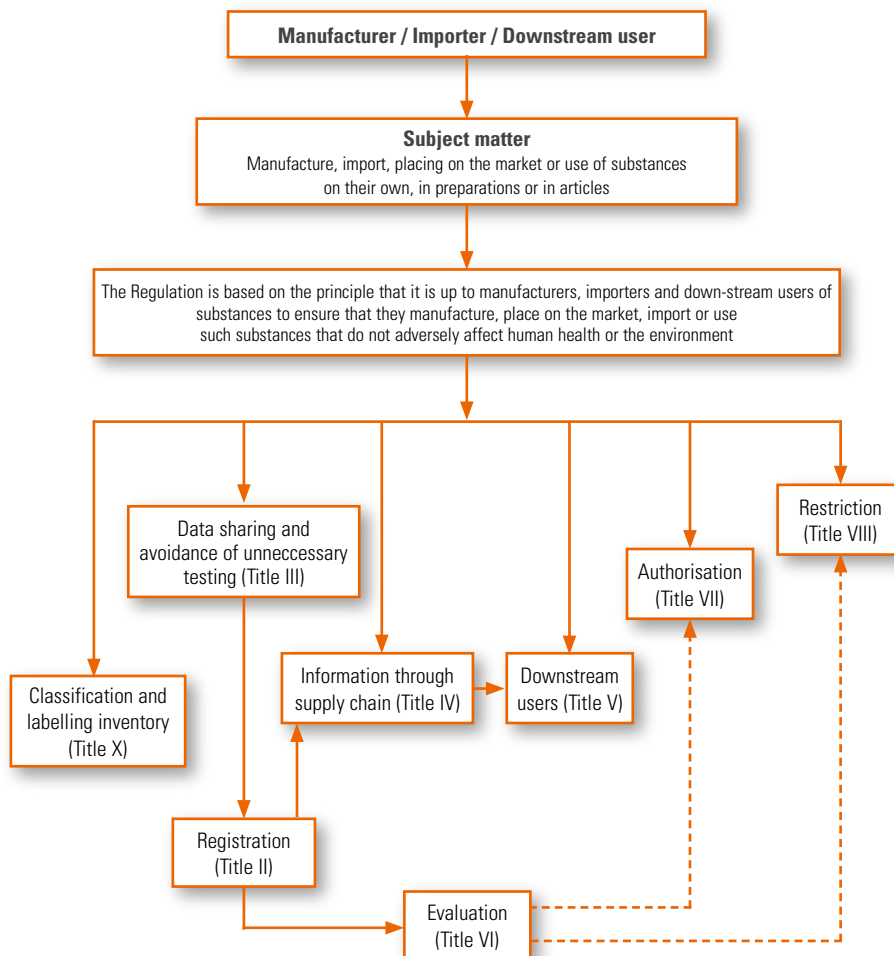
Today?

Not all of us have prepared themselves over the last years. Therefore most of us are not REACH-ready. But the importance and impact of REACH cannot be overestimated:

- REACH is very wide in its scope, covering substances, whether manufactured, imported, used as intermediates or placed on the market, either on their own, in preparations or in articles.

- The communication requirements of REACH ensure that not only manufacturers and importers, but also their customers (i.e. downstream users and distributors) have the information they need to use chemicals safely. Extended MSDS will be the result of this.

REACH overview



Tomorrow!

The European Commission has developed the "Interim Strategy" to enable a smooth transition from the existing chemical legislation to REACH. This preparative strategy is crucial, and is supported by numerous REACH Implementation Projects or RIP's. But practical, hands-on help and support may be appropriate, to realize the REACH turn around in your company organization. The multidisciplinary team of SGS will REACH you the solution...



ENVIRONMENTAL SERVICES

SGS BELGIUM NV

Haven 407
Polderdijkweg 16
B-2030 Antwerpen
t +32 (0)3 545 87 50
f +32 (0)3 545 87 69
e be.environment@sgs.com

SGS NEDERLAND B.V.

Malledijk 18
P.O. Box 200
3200 AE Spijkensisse
t +31 (0)181 69 43 10
f +31 (0)181 69 35 95
e nl.envi@sgs.com